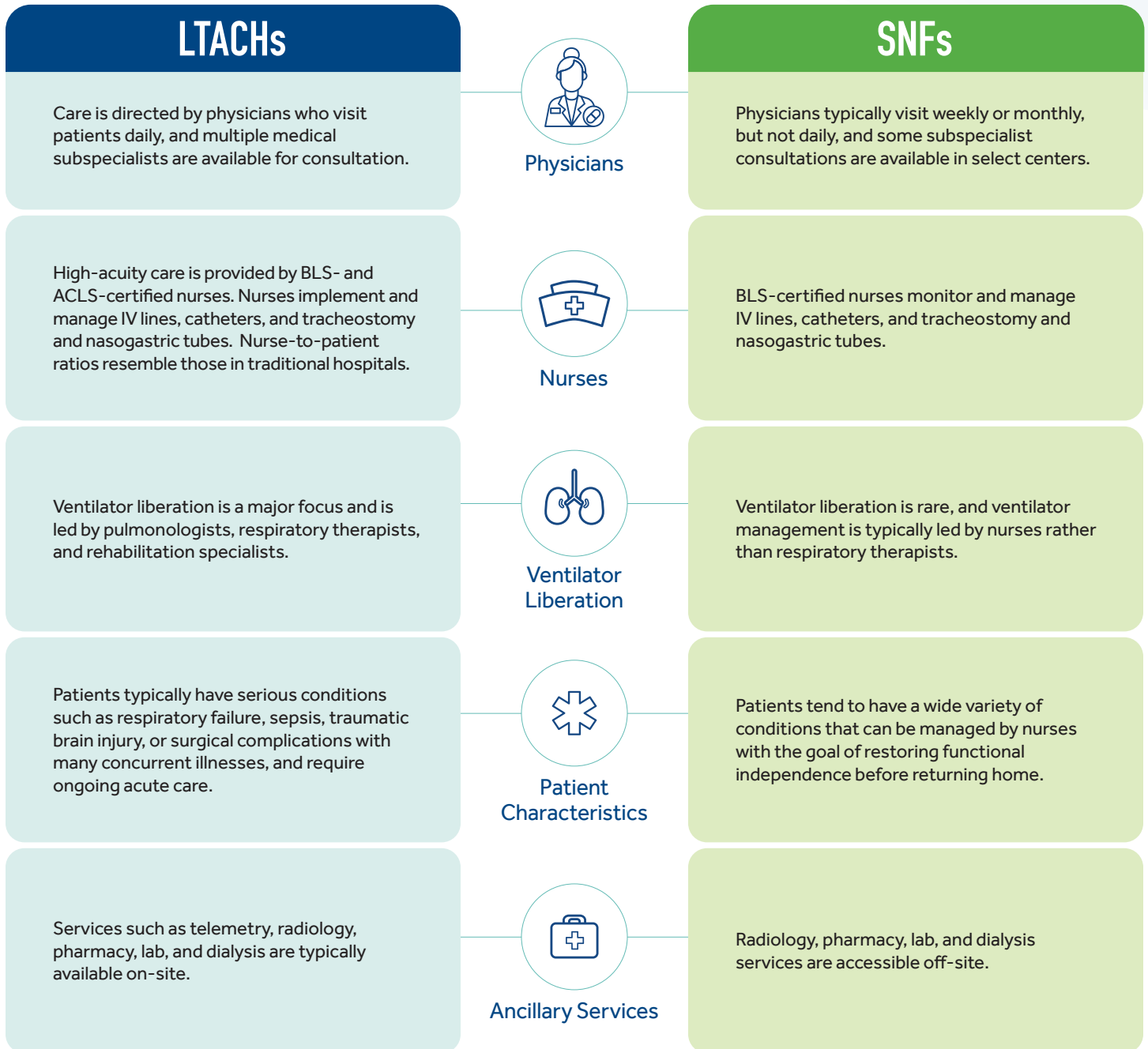


5 Setting Distinctions: LTACHs vs. SNFs

While long-term acute care hospitals (LTACHs) and skilled nursing facilities (SNFs) are both potential options for patients discharging from a hospital, they offer very different levels of care. The unique expertise and resources available at LTACHs allow them to provide medically complex patients with specialized treatment that can reduce readmissions and care costs. Below are five key differences between LTACHs and SNFs that impact patient recovery.



NEXT LEVEL CARE. NEXT LEVEL RECOVERY.

Kindred Hospitals provide specialized long-term acute care and rehabilitation for medically complex patients.

Learn more about how Kindred Hospitals can improve outcomes for medically complex patients at [kindredmanagedcare.com](https://www.kindredmanagedcare.com).