



Register into Kindred MDM - Apple

The intended use of this document is to provide instructions for end-users to enroll iOS mobile devices into Kindred Healthcare's Enterprise Mobility Management System.

IS-Mobility

January 3, 2020

PREREQUISITES

DEVICE REQUIREMENTS

INSTALL and update most recent iOS version via **Settings > General > Software Update > Download and Install** (if available).

NOTE: *Verify the device is connected to WiFi before attempting to update.*

PRIOR TO REGISTERING WITH MOBILEIRON

Kindred Healthcare prohibits jailbroken or compromised devices from accessing Kindred Healthcare's resources. To protect Kindred's resources, Kindred Mobility may wipe or remove these devices in MobileIron without notice.

Verify the device is connected to a WiFi that is NOT kindred-connect or rehab-connect before attempting to register into MobileIron. (i.e. connect to a guest network).

NOTE: *At the end of this document, you may need to **forget** the WiFi that was just used for this registration.*

NOTE

The following steps/screenshots may vary based on your device and version of iOS.

CHANGES

1.0

Initial Release



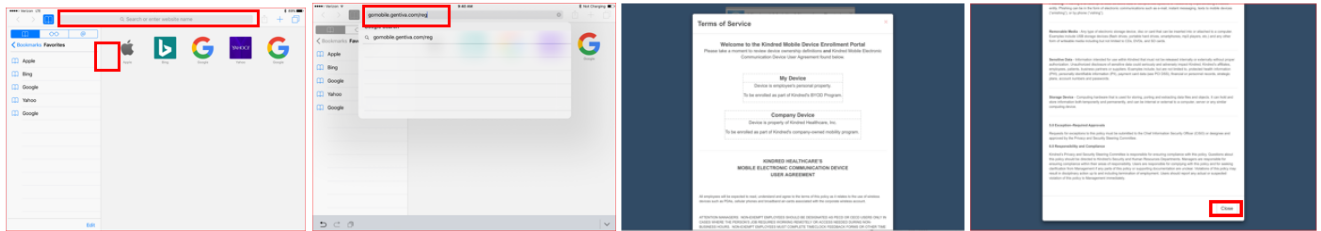
MOBILEIRON REGISTRATION

Step 1



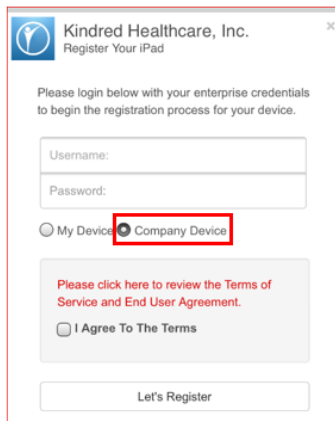
Tap **Safari**.

Step 2



Tap the address bar and type: **gomobile.kindred.com/reg**. Tap **Go**. Read the User Agreement and tap **Close** in the bottom right.

Step 3



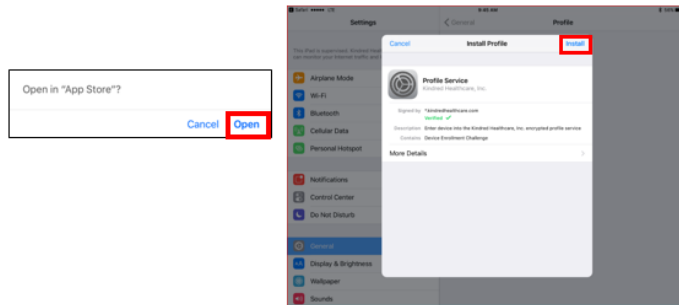
If prompted to "Save This Password?"
Select Never for This Website.

Enter your **Username**, **Password**, and check the box, **'I Agree To The Terms'**. Tap **Let's Register**. Tap **Never for This Website** if prompted to save the password.

NOTE: Make sure to select **Company Device** if your device is a Company issued device.

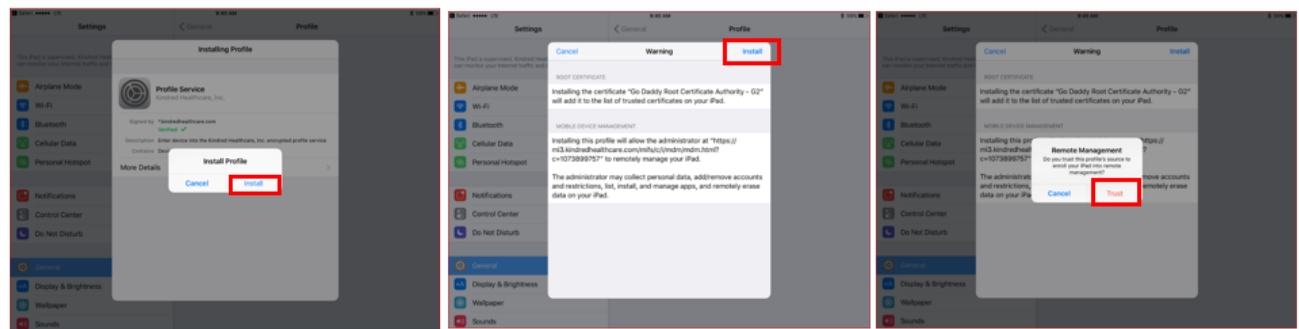


Step 4



If prompted to Open in App Store? tap **Open**. Tap **Install**. Otherwise, you will need to open **Settings > Profile Download**
NOTE: If you have a Passcode set, you will be prompted to enter your Passcode (device unlock code).

Step 5



Tap **Install, Install, Install**, then **Trust**.
NOTE: You may be prompted to install MobileIron, tap **Install** (device unlock code).

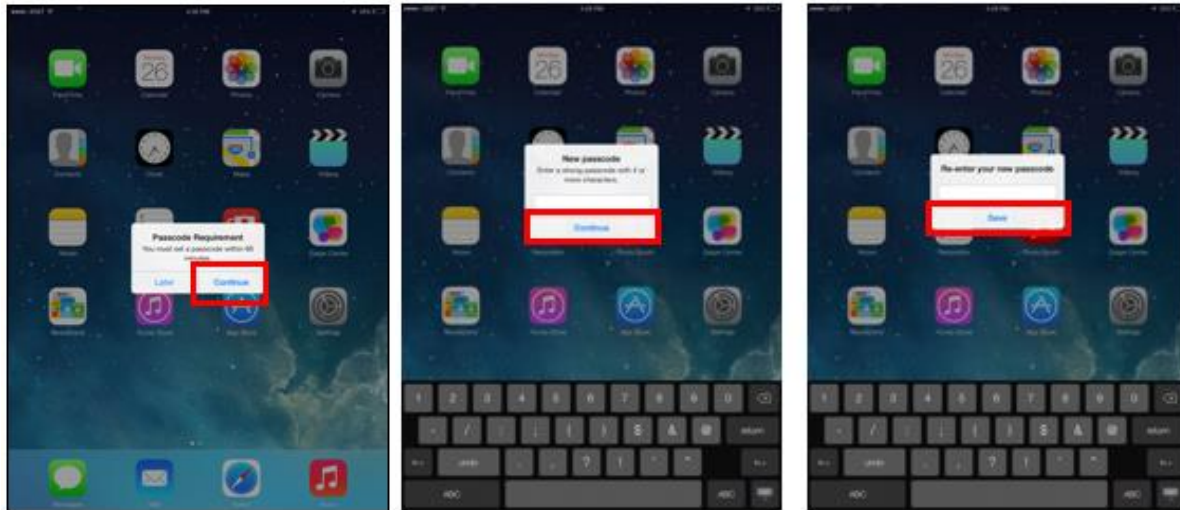
Step 6



Tap **Done**, Safari will open, press the **Home Button** to get back to the Home Screen.

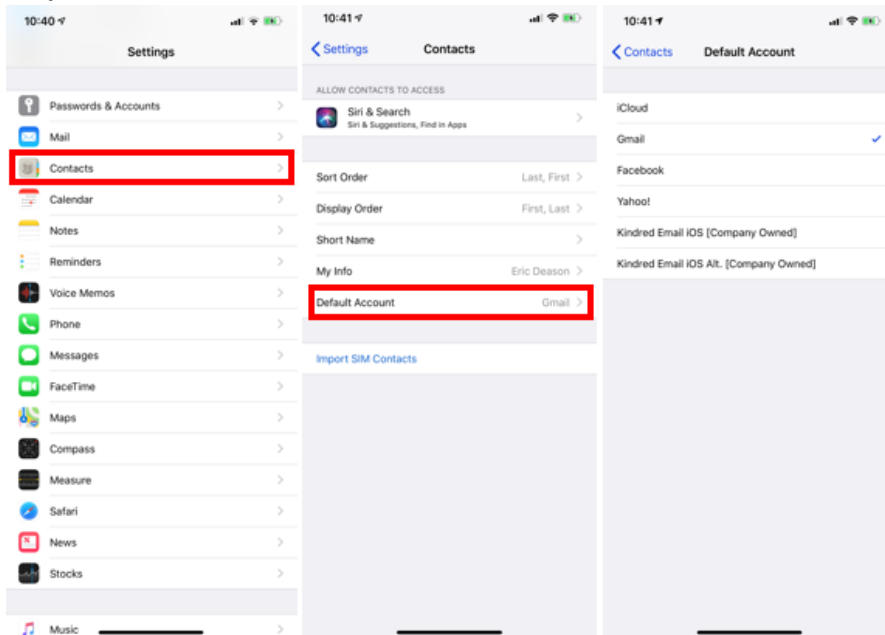


Step 7



If your device is not Passcode protected, you will see a Passcode Requirement prompt. Tap **Continue** to set a device Passcode. Enter a 4 digit Passcode, tap **Continue**. Re-enter the Passcode and tap **Save**. **Your email will begin to synchronize. MobileIron Registration is complete.**

Step 8



Tap **Settings**, then select **Contacts**, and then **Default Account**. Choose any account other than **Kindred Email iOS** as it will take newly added contacts and sync them with Kindred Healthcare. When the device is removed from MobileIron, the newly added contacts would be locked to the user's Kindred Exchange account.

NOTE: Recommended accounts would be *iCloud* or *Gmail*, as they will sync automatically and restore automatically when the account is added to a device.

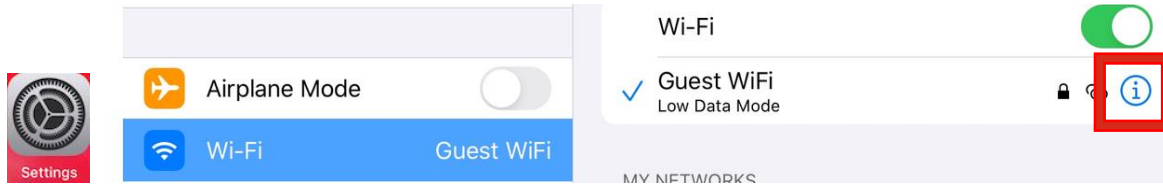
NOTE: Company-Owned devices **MUST** have the default account set to **Kindred Email iOS [Company Owned]**.




FORGETTING THE WIFI USED TO REGISTER THE DEVICE

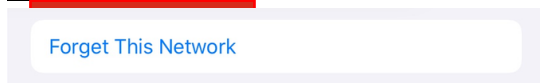
Only follow these steps for **Company-owned** mobile devices.

Step 1



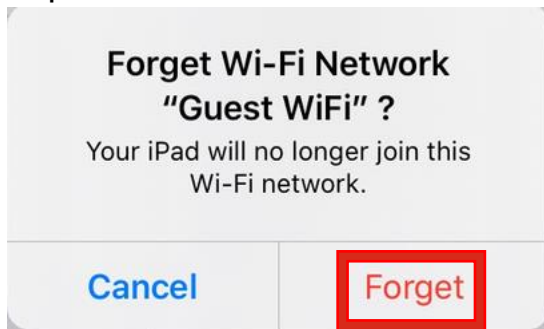
Tap **Settings**, then Tap the **WiFi** used to register this device (Guest WiFi is an example), then the .

Step 2



Tap **Forget This Network**.

Step 3



Tap **Forget** when prompted.

